

The main logo for the product is centered on the page. It features the word "SPRAY" in large, bold, blue letters with a white outline. Below it, the words "& SET" are in large, bold, black letters with a white outline. A small "TM" trademark symbol is positioned to the right of "SET". Underneath the main text, the words "WALL TILE ADHESIVE" are written in a smaller, bold, black, sans-serif font. The entire logo is set against a light gray diamond-shaped background.

INSTRUCTIONAL BOOKLET

SECTION 1	
IMPORTANT INFORMATION ON HOMAX® SPRAY & SET™ WALL TILE ADHESIVE	1
1.1 Application and single can coverage	1
1.2 Uses & limitations	1
1.3 Helpful hints	2
1.4 Easy application checklist	3
SECTION 2	
PLANNING YOUR PROJECT	4
2.1 Top ten things to remember when preparing to tile your wall	5
SECTION 3	
AT THE STORE	6
SECTION 4	
PREPARING THE WALL	7
SECTION 5	
PREPARING THE TILE	9
5.1 Marking and cutting tile	9
SECTION 6	
APPLYING SPRAY & SET™ WALL TILE ADHESIVE	11
SECTION 7	
SETTING TILE	12
SECTION 8	
REPOSITIONING TILE	13
SECTION 9	
ADDITIONAL APPLICATIONS	14
9.1 Open mesh-backed mosaic tiles	14
9.2 Tiles larger than 6" x 6" and up to 12" x 12"	14
9.3 Tiles and trim pieces with irregular (not flat) backs	15
SECTION 10	
GROUTING	16
SECTION 11	
APPLYING THINSET	17

SECTION 1

IMPORTANT INFORMATION ON HOMAX® SPRAY & SET™ WALL TILE ADHESIVE

SPRAY & SET™ Adhesive offers you a faster and easier way to set wall tile. It is an ideal alternative to traditional thinset and mastic adhesives in many tiling applications. To achieve optimum results, please read this information carefully.

APPLICATION & SINGLE CAN COVERAGE

- Up to 4" x 4" ceramic and porcelain tile – 35 sq. ft.
- 6" x 6" or larger ceramic and porcelain tile – 30 sq. ft.
- 4" x 4" smooth backed stone – 40 sq. ft.
- 6" x 6" or larger smoothed back or 4" x 4" textured back stones – 35 sq. ft.

USES & LIMITATIONS

SPRAY & SET™ Adhesive works with structurally sound natural stone, ceramic and porcelain tiles of consistent thickness with an even, flat backing.

Special projects, including mesh-backed tiles and stones, tiles longer than 8", mosaics and other non-traditional tiles, require additional adhesive application. In addition to adhesive applied to the wall surface, adhesive should be back-buttered (applied to the back of the tile).

SPRAY & SET™ Adhesive cannot fill voids or fix problems with irregular tiles, stones or walls.

To test stones and tiles for compatibility, place them on a flat surface. If tile can be made to rock, it is not suitable for use with SPRAY & SET™ Adhesive.

SPRAY & SET™ Wall Tile Adhesive is not for use with loose slate, hollow back tile, ceramic accessories or handholds. It is not for use in showers and tub surrounds or for floors or overhead/ceiling surfaces.

To bond properly, wall surfaces must be dry, solid, flat, and free of rust, loose paint, old adhesive residue, wax, curing compounds, sealers, hardeners, oil, and any other materials that could interfere with the bonding of the adhesive.

Sheet rock should be primed and/or painted with latex paint, not oil-based paints.

SPRAY & SET™ Adhesive is intended for interior use only, and must be stored and used at room temperature.

**If you have questions or comments
please contact us.**

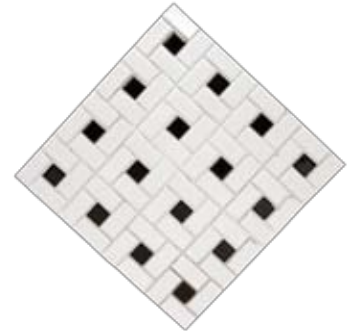
**Call 1-877-235-9733 or
e-mail custsvc@sprayandset.com**



Now, you can start and finish tiling jobs in just one day.



Be sure to read all directions twice.



SPRAY & SET™ Adhesive is ideal for ceramic and porcelain tile, and can also be used with mesh-backed tile.



Immediately after spraying.



30 minutes after spraying.

This is what a properly sprayed wall will look like immediately and after 30 min.

HELPFUL HINTS

Here are some tips to make tiling your backsplash or walls easier with **SPRAY & SET™ Adhesive**.

For Special Applications

- Tiles larger than 6" x 6" will require more adhesive. See the directions in Section 10 "Additional Applications" for details.
- **SPRAY & SET™ Adhesive** will not work as a patching or leveling product for tiles or damaged or uneven walls – for these situations, you should consider using thinset or mastic.
- For mosaics or irregular shaped tile and trim products, apply **SPRAY & SET™ Adhesive** normally to the wall and apply an additional light coating to the back of the tile (back buttering).
- Over joints and in corners where there may be slight surface irregularities, apply an additional light coat to the back of the tile.
- Do not use **SPRAY & SET™ Adhesive** on slate or hollow back tile. See the video for a demonstration on testing for flat tiles and stones.

Be sure tile and wall are clean, dry and free of dust or other particles.

- It is essential that you thoroughly clean and wipe the wall and tiles to achieve the strongest bond.

While applying **SPRAY & SET™ Adhesive**, be sure to hold the can 18" to 24" away from the wall.

- This allows the product to fully expand for maximum strength and coverage.
- It allows you to more easily control the application and achieve an even spray pattern.
- Watch the video on our website for a demonstration.

Wait 30 minutes after applying adhesive or until the adhesive can be touched without transfer to your finger.

- This brief waiting period will allow an instant bond of the tile and prevents slippage.
- It provides maximum strength for the adhesive.
- Please note that high humidity or a heavy application will extend drying time.
- After thirty minutes, test the adhesive by lightly touching it with your finger – if there is no adhesive transfer to your finger, you can begin tiling.



SPRAY & SET™ Adhesive is not for use on damaged walls.



Walls must be clean and dry before setting tiles.



Be sure to hold the can 18" to 24" from wall when spraying.



Be sure to test the wall with your finger before setting tiles.

EASY APPLICATION CHECKLIST

Be sure to follow these steps during application:

- Thoroughly clean and dry the wall surface and tile backs.
- Mask off your work area to protect from overspray.
- Make certain the SPRAY & SET™ Adhesive is at room temperature when applying.
- Use only tiles and stones that lay flat on the wall without rocking (be sure to test your tiles before setting).
- Shake the can and pull safety tab to begin application.
- Spray at an arm's length from the wall (18" - 24").
- Spray in a circular, even pattern.
- Let dry for at least 30 minutes and until the wall passes the touch test.
- You can begin grouting one hour after setting tile.



Carefully prepare the work area before setting tile.



Shake the can well before use.



Be sure to remove the safety tab before spraying.



SPRAY



**BEGIN TILING
AFTER 30
MINUTES**

SECTION 2

PLANNING YOUR PROJECT

Preparation is the key to success with any DIY project. So, be sure to consider the following:

- A good place to start is by measuring your wall area – to determine square footage, measure the height and width of the wall, and then multiply those two numbers together (i.e., 8' H x 4' W = 32 square feet).
- Be sure to bring those dimensions to the store when you buy your tile—and plan on buying 10% more tile than you need to account for breakage and replacements.
- When choosing a tile, be sure to consider its size, style, color, pattern, texture, and your home's décor.
- When choosing an adhesive, be sure to consider the type and size of tile, the condition of your wall, the location, and any special considerations (such as exposure to water).
- Homax® SPRAY & SET™ Wall Tile Adhesive is ideal for structurally sound natural stone, ceramic and porcelain tiles up to 6" x 6".
- SPRAY & SET™ Adhesive can work with tiles larger than 6", mesh-backed tiles and stone, mosaics and other non-traditional tiles, but requires additional coverage using back buttering (applying adhesive to the back of the tile) in addition to the wall surface. See Section 10 "Additional Applications" for more details and other uses for SPRAY & SET™ Adhesive.

Be sure to plan ahead and have enough adhesive for this additional coverage.

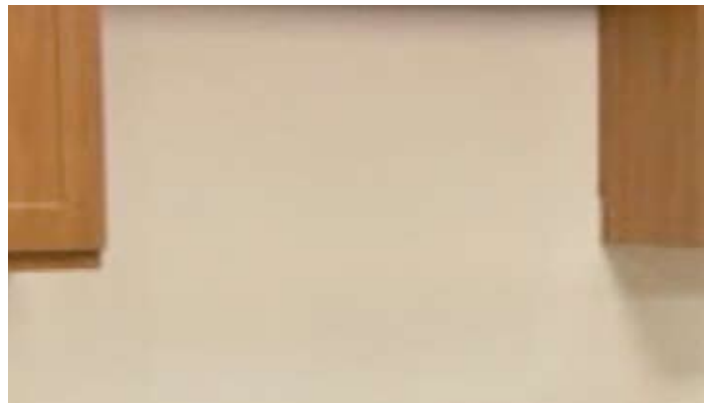
- SPRAY & SET™ Adhesive is for walls only and is not recommended for floors, overhead or ceiling surfaces, showers or tub surrounds.
- SPRAY & SET™ Adhesive is not for use with loose slate, hollow back tile, or to affix accessories and handholds to walls.
- Your tiles must lay flat to bond properly with SPRAY & SET™ Adhesive, so test tiles by laying them on a flat surface to see if they can be made to rock back and forth – if they can, you should consider a different adhesive. See the video for a demonstration of this test.



Measure your wall carefully to determine square footage.



Consider size, color, style, pattern and texture when choosing your tile.



Remember, SPRAY & SET™ Adhesive is for walls only.



Test your tiles to make certain they lie flat before setting.

TOP TEN THINGS TO REMEMBER WHEN PREPARING TO TILE YOUR WALL.

- 1. Plan ahead.** Measure the area you're going to be tiling. Explore the types and styles of tile available. Do your homework before you do your housework.
- 2. Make sure your wall surface is solid, smooth, even and flat.** The surface of your wall plays a big role in determining the kind of tile and adhesive you choose.
- 3. Take into account the room you're tiling.** The kind of room – kitchen, bathroom, interior, exterior – may impact your tiling and adhesive choices. Be sure to consider exposure to water and other environmental factors.
- 4. Choose your tile carefully – you'll have to live with it a long time.** Maybe the hardest part of a tile project is choosing the tile. Tile comes in different sizes, shapes, patterns, and materials. The tile you choose will affect which adhesive is right for you. And, be sure to get about 10 percent extra to allow for trim and breakage.
- 5. Determine the right adhesive – SPRAY & SET™ Adhesive, thinset, or others.** Be sure to match the right adhesive to the right job.
- 6. Make certain you have the right tools.** Your wall tiling tool box may need to have a wet tile saw or snap cutter, trowel, sponges, clean rags, grout float, level, drop cloths, sandpaper, spacers, a tape measure, buckets, and cleaning supplies like Goo Gone®. Remember, SPRAY & SET™ Adhesive requires fewer tools than thinset or mastic.
- 7. Choose your grout carefully.** Get sanded or unsanded depending partly on the grout line size. What about colors? You may also want to consider premixed grout to make this part of your project easier and cleaner.
- 8. Prepare the job site carefully.** Make certain your tools are nearby. Remember, measure twice, cut once! Prepare the wall surface thoroughly – making sure its clean, dry, even and free of flaws. Cover all exposed areas and make sure lighting and ventilation are adequate.
- 9. Take your time.** And, if you have any questions, you may contact us. Plus, in addition to our website, you'll find valuable tiling information on the Internet and in books available at home improvement stores.
- 10. Be sure to wait the recommended time before grouting** – SPRAY & SET™ Adhesive only requires a one-hour waiting period after affixing tiles. Finally, be sure to thoroughly clean your room after you finish your tiling project.



Be sure to carefully check your wall surface.



SPRAY & SET™ Adhesive is ideal for backsplashes.



Talk to your Sales Associate about choosing the correct tools.

SECTION 3

AT THE STORE

The sales representative at the store can help you make the right choices about tile, supplies and tools. Be sure to ask lots of questions.

- Remember, choose your adhesive based on the job, room, type of tile you select and the condition of your walls. For most projects, Homax® SPRAY & SET™ Adhesive offers you an economical and easy alternative when compared to mortars and mastics.
- Just as you should buy enough tile for your project – plus a 10% overage – be sure to buy enough supplies, including grout, sealer, and, of course, adhesive.
- Each can of SPRAY & SET™ Adhesive offers you up to 40 square feet of coverage – coverage rates are a guide and figures will increase or decrease depending on the spraying technique implemented.

Beyond the tiles, here is a list of supplies you might need for your project...

- Adhesive
- Grout
- Grout Float
- Grout Sealer
- Cutting Tool (Snap Cutter, Wet Tile Saw, Tile Nippers)
- Sponges
- Clean Rags
- Drop Cloths
- Rags
- Tape Measure
- Level
- Power Drill & Screws
- Caulk Gun
- Margin Trowel or Mixer for mixing grout
- Framing Square
- China Marker
- White Scrub Pad for tough grout residue
- Safety Glasses for spraying and cutting
- Carbine Hole Saw Drill Bit if holes are needed



You'll find SPRAY & SET™ Adhesive at select Lowe's stores.



You'll find everything you'll need in the Tiling aisle.



Here are some of the tools you'll need to complete your tiling project.

SECTION 4

PREPARING THE WALL

To create a permanent bond between your tile and the wall, you must be certain that your wall surface is flat, even and clean. Use a level to check the condition of your wall.

Homax® SPRAY & SET™ Adhesive is designed only for walls in good condition. SPRAY & SET™ Adhesive cannot fill voids or fix problems with damaged or irregular walls or tiles. In those cases, you may want to consider a traditional adhesive.

SPRAY & SET™ Adhesive is designed to be applied to walls that meet code for wall tile application. More details can be obtained from your local building code office and from the TCNA (Tile Council of North America).

Here are some steps you'll need to take to prepare your wall:

- Sheet rock should be primed and/or painted with latex – not oil-based – paint before setting tiles. Glossy paints will bond better if they are lightly sanded with a course sandpaper to de-gloss. Wallpaper should be removed and the surface repainted if damaged.
- Plaster walls should be carefully examined. You can tile directly on plaster walls if they are solid, hard and not cracked or uneven. Check if the surface is hard enough by scratching it with a screwdriver. If it powders, you should cover the plaster with sheetrock or backer board, depending on the application area. Hard plaster will not powder and, like concrete, is resistant to scratching.
- Exterior grade plywood that is smooth, flat and not full of knotholes can be tiled to directly for interior applications.
- Backer boards can be used with SPRAY & SET™ Wall Tile Adhesive if they are applied with the smooth side out and installed per manufacturers' directions. Joints must be finished smooth so that tiles do not rock on them.
- Clean your walls by using a damp – not wet – rag or sponge to remove all dust.
- If tiling a backsplash, make sure to degrease your wall if it's dirty.
- Mask off the area to be tiled to protect other surfaces from overspray – and be sure to spread drop cloths and lay out the tools you'll need.
- Design a grid pattern to determine how you will set the tiles on the wall.
- Lay out the guide lines on the wall itself.
- Lay out 10 of your tiles vertically on a flat surface with the grout line gap you want and measure the full height of this column of tiles. Divide the number by 10 and this is the average height of your tiles.



Sheet rock should be primed and/or painted with latex paint.



Remove dust from your walls with a damp rag or sponge.



Be sure to mask off the area to protect surfaces.



Lay out a grid pattern on your wall before setting tiles.

- Using a level, find the lowest point on your wall and use this as the point to measure the height of your wall to be tiled – then, using your level, draw a horizontal line through the midpoint for the length of the wall. Measure from the midpoint line to the bottom edge of the wall to be tiled. Divide this measurement by the average height of your tiles and calculate if it will leave you with less than half a tile. If it does, move the horizontal line up or down by $\frac{1}{2}$ the tile height so that your cuts leave you with a larger piece of tile.
- If the bottom surface of the wall is very straight and level, you may want to design your pattern to have a full row at the bottom or at the top for aesthetic reasons and in this case you will need to adjust your horizontal midline accordingly.
- Next, measure the width of your wall to draw a vertical line through the midpoint of your horizontal line.
- Lay out 10 of your tiles lengthwise on a flat surface with the grout line gap you want and measure the full length of this row of tiles. Divide the number by 10 and this is the average length of your tiles.
- Using your level, draw a plumb line through this point from the bottom of the tiling area to the top. Measure the distance from the midpoint of the wall and divide this measurement by the average length of your tiles to see if this will leave you with less than $\frac{1}{2}$ a tile. If it does, move the line left or right by $\frac{1}{2}$ of the length of the tile so that your cuts leave you with a larger piece of tile.
- Mark your design grid on the wall surface using these vertical and horizontal lines as references to keep your pattern level and plumb for a professional appearance.
- Remember, unlike mastics and thinset, **SPRAY & SET™** Adhesive leaves your grid lines visible, which makes straight and decorative pattern tiling easier.



Use a level to carefully layout your grid.



A proper grid pattern will help prevent tiling mistakes.



Lay out your tiles and measure carefully to determine each tile's length with grout lines.

SECTION 5

PREPARING THE TILE

For Homax® SPRAY & SET™ Adhesive to bond properly, the wall and tiles must be clean and free of dust. During waiting periods, be sure to clean the back of each tile carefully with a damp, not wet, sponge or rag.

- Clean and dry tile backs completely – do this while waiting for the adhesive to cure after spraying it on the wall, or before back buttering.
- Be sure to check to see if your tiles are suitable for use with SPRAY & SET™ Adhesive.
- Set a tile on a flat surface, if it can be made to rock back and forth, it is not suitable.
- If a tested tile lies flat, it will bond correctly with SPRAY & SET™ Adhesive.
- You will most likely need to cut a row of tiles for trim, corners, borders, etc. Be sure you have your cutting tool handy and extra tiles for this process. Here's a tiling tip: You can set tiles more easily and accurately by placing full tiles on the wall first and then placing cut tiles later.



Be sure to clean and dry tile backs.



Test tiles to make certain they lie flat.

MARKING AND CUTTING TILE

Virtually all tiling projects require some tile cutting. To simplify this job all you need is a little knowledge and the right tools. Snap cutters and wet saws both make good straight cuts in tiles. Additionally, a wet saw allows you to make L-shaped, notch and irregular cuts – not possible with a snap cutter. Also, the edge on a wet saw cut is smoother and will not require a file to smooth the edges of the tile.

One other tool to consider having in your toolbox is a tile nipper. A tile nipper is used to make circular and irregular cuts at the edges of tile.

Which cutting method you choose is up to you – both offer affordable options. Detailed information on cutting tiles is available in DIY books and on a wide array of websites.



Wet Saw



Snap Cutter and Tile Nipper

To help get you started, here are some pointers on cutting tile.

- Mark a straight cut by placing the tile to be cut over the last tile placed in the row or column. Place another tile over it and against the finished edge, allowing for a ¼-inch spacer. Then, mark the tile to be cut along the edge of the marker tile.
- For complex cuts, measure and make a template out of cardboard or thick, stiff paper. Cut out the template and trace it on the tile to be cut.
- Mark holes by holding the tile over the last tile set vertically and marking the sides of the hole where the tile touches the obstacle. Then make your horizontal marks, placing the tile on the tile beside it and again mark the sides of the hole.
- Using a square, transfer the two edge marks to where they meet in the middle of the tile – these are the outside edges of the hole. Trace the hole using some template like a washer.
- You can use any type of cutter you choose, but it is a good idea to ask for a demonstration on how to use a cutter before buying it.
- Snap cutters will make great straight cuts in ceramic tiles, but do not work for stone.
- Wet saws allow you to make straight cuts, notches and even nibble away the edges for irregular cuts. Follow all manufacturers’ directions and warnings when using this power tool.
- Tile nippers are used to make round or irregular cuts at the edges and corners of tile.



When cutting a tile be sure to measure carefully.



Mark holes by holding the tile over previously set tiles.



Use a square to transfer cut marks to your tile.

Here are the three most popular tile cutting tools in action.



Snap Cutter



Wet Saw



Tile Nippers

SECTION 6

APPLYING HOMAX® SPRAY & SET™ WALL TILE ADHESIVE

To create a permanent bond between your tiles and the wall surface, follow these instructions.

- Begin by shaking the can of SPRAY & SET™ Adhesive thoroughly.
- Next, remove the blue safety tab.
- Begin working in an area no larger than 3 ft. by 3 ft. until you are comfortable using the adhesive.
- Hold the can upright at least 18"-24" from the wall surface.
- The can should be no closer than an arm's length away from the wall.
- Pull the trigger completely back for a proper spray pattern and even coverage.
- Spray the adhesive in a sweeping circular motion to achieve a full and even coverage without gaps or uncovered areas.
- The sprayed surface should create a heavy frost appearance, with a minimal thickness of 1/8 inch, about the thickness of a nickel.
- Remember to spray the adhesive a little heavier in areas like corners and over tape joints where there may be some minor irregularities in the wall surface.
- Once sprayed, you must wait 30 minutes before tiling – possibly longer if the humidity level in the room is high.
- It is perfectly normal for the adhesive to contract after spraying, partially exposing the wall surface.
- If globs form, wipe off the excess and reapply.
- When finished spraying, do not wipe the spray tip – leave adhesive to dry on the tip until your next use. (this keeps it from drying out in the nozzle).
- After thirty minutes, test the adhesive by lightly touching it with your finger – if there is no adhesive transfer to your finger, you can begin tiling.
- During this touch test, if adhesive does transfer to your finger, wait and test the wall again every 5 minutes until there is no transfer of adhesive.
- Working time, once the adhesive is no longer tacky, is about one hour.



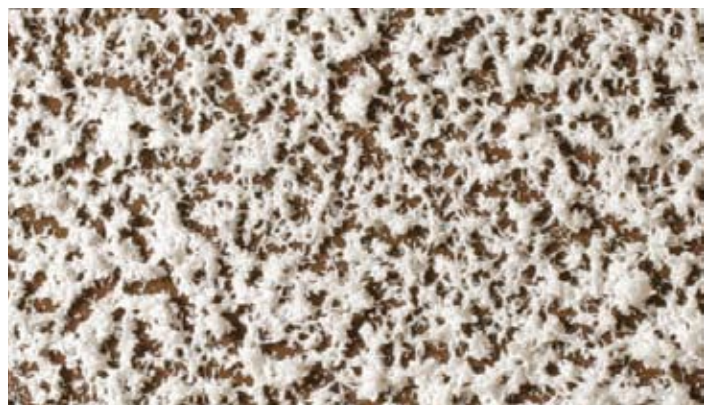
Shake the can thoroughly.



While spraying, hold the can at least 18"- 24" from the wall surface.



This is what a properly sprayed wall looks like immediately after spraying.



This is what a properly sprayed wall looks like after 30 minutes.

SECTION 7

SETTING TILE

After the Homax® SPRAY & SET™ Wall Tile Adhesive has cured, you can begin by setting your tiles.

- To set tiles, hold them at an angle to the surface, align one side with adjacent tiles and then tip the tile onto the glued surface.
- Do not slide or wiggle the tiles into place or the bond will not hold.
- Once properly aligned, press the tile firmly in the adhesive.
- Once the tile is placed, it should not move.
- If using irregular shaped tiles, stone, mosaics, mesh tile, or large format tiles, see Section 10 "Additional Applications".
- It is best to back butter tiles when spraying the wall to give those tiles a longer cure time and better adhesion.
- You only have to wait one hour after setting your tile to begin grouting.

Here's a helpful hint: To save time and make the project easier, spray the backs of tiles that will need back buttering when you are spraying your wall. That way they are ready to use when you need them. It is a good idea to back butter a few extra tiles on all jobs in case you need to reposition any tiles. Then, you will not have to wait to set those tiles. If you do not need them, you can use them as your last tiles and you have not wasted anything.



Tip the tile into place – do not slide or wiggle tiles.

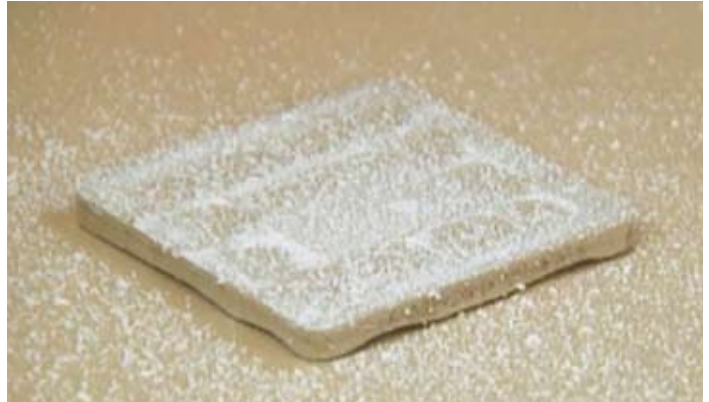
SECTION 8

REPOSITIONING TILE

- If you need to remove or reposition a tile after setting, grip it firmly with two hands and pry it off by pulling it back and down from the wall – if you need to, you can also gently pry the tile off with a flat-head screwdriver.
- To reattach the tile, apply more adhesive to the wall surface or to the tile back, wait at least ten minutes, or until there is no heavy transfer of adhesive using the touch test, and then reset the tile in the correct position.
- This is a good time to use some of those tiles you back buttered while spraying the wall. The tile you removed can be back buttered for use later or can just be applied in another position where a tile has not yet been set.



To remove a tile, pull it back and down from the wall.



Be sure to apply more adhesive when re-affixing the tile.

SECTION 9

ADDITIONAL APPLICATIONS

We have supplied the following information to help you with projects not specifically listed in the directions you'll find on your can of **SPRAY & SET™ Adhesive**. For additional information, please contact Homax. You'll find contact information on the **SPRAY & SET™ Adhesive website**.

OPEN MESH-BACKED MOSAIC TILES:

- **SPRAY & SET™ Adhesive** will not work on paper-backed mosaics or mosaics where more than 20% of the tile's back is covered with the binding material. **SPRAY & SET™ Adhesive** can be used on open mesh-backed mosaic tiles if you follow these additional steps.
- Begin by following all directions for tiles smaller than 6" x 6".
- After applying **SPRAY & SET™ Adhesive** to the wall, apply an even, though lighter coat to the backs of the mosaic tiles making sure you get coverage on the tiles themselves and not just the webbing.
- Allow the adhesive to cure along with the wall so that the adhesive on the tile also passes the touch test.
- Set the mesh-backed tile by starting from one edge and slowly rolling the mosaic sheet onto the wall, adjusting its position and then pressing it on as you proceed.
- Finish and apply grout in a normal fashion and remember to caulk all the edges to seal the tile surface.

TILES LARGER THAN 6" X 6" UP TO 12" X 12":

- **SPRAY & SET™ Adhesive** can be used for tiles larger than 6" x 6" if the following conditions are met. Because larger tiles are more affected by irregular walls, walls must be flat and straight, the tiles should not rock, and at least 40% of the back of the tile must make solid contact with the wall. If the tiles move or there are large gaps, a filling adhesive like thinset should be used.
- Follow all regular directions for tiles smaller than 6" x 6".
- Apply adhesive as instructed in the directions and, in addition, apply a light coating of adhesive to the backs of all the tiles (back buttering).
- The back buttering application can be about ½ the application rate of the amount of adhesive used on the wall.



SPRAY & SET™ Adhesive can be used on open mesh-backed mosaic tile.



Be sure to apply a light coating (back-buttering) to mesh-backed tiles.



SPRAY & SET™ Adhesive can work with oversize tile.



Follow all regular directions when setting oversize tile.

- As with the wall surface, allow the adhesive on the tile backs to cure until it passes the touch test.

TILES AND TRIM PIECES WITH IRREGULAR (NOT FLAT) BACKS:

- SPRAY & SET™ Adhesive can be used with tiles that have some irregularly shaped backs and profiles as long as they can lay flat against the wall surface and be fully supported by the wall. The tile must have at least 20% of its back surface contacting the wall for proper support. The tiles cannot have a tall enough profile that would allow a person to grasp it with their hands or use it as a handhold when installed.
- See photos of some acceptable profiles that can be affixed with SPRAY & SET™ Adhesive.
- See images for examples that should not be used with SPRAY & SET™ Adhesive.
- To ensure a secure attachment, be sure to follow all listed directions for standard tiles and the additional steps detailed here.
- Apply adhesive to the wall surface as instructed, and then apply a light coating of adhesive to the backs of all the tiles (back buttering).
- The back buttering application can be about ½ the application rate of the amount of adhesive used on the wall.
- All exposed edges of the trim tiles should either be grouted or, if serving as the final edge of the tiling surface, sealed with a caulk application.



This is an acceptable profile of an irregular backed tile.



This is an acceptable profile of an irregular back tile.



This tile cannot be used with SPRAY & SET™ Adhesive.



Another example of an unacceptable tile.

SECTION 10

GROUTING

You can begin grouting one hour after setting tile. There's no need to wait longer. Here are some grouting tips.

- Begin by mixing your grout, carefully following all manufacturers' directions or by using premixed grout.
- Spread grout using a rubber grout float – holding the float at about a forty-five degree angle.
- Make sure to press the grout into all joints using several sweeps.
- Remove excess grout with diagonal sweeps in relation to the grout lines, while holding the float at a steep angle to reduce the removal of grout from within the grout lines.
- Grout will take about 10-30 minutes to set – if you press a fingernail into the grout and it does not leave a mark, you are ready to start cleaning the grout. Again, be sure to follow all manufacturers' directions.
- Once set, clean the tile with a damp sponge, rinsing it often in clean water – make sure the sponge is not too wet.
- If grout is hard to remove, use a white plastic fine scrub pad, rinsing it often.
- Use as little water as possible during grout cleaning to reduce the risk of inconsistent color. Too much water and too many cleanings can lighten the color of your grout unevenly.
- To make clean-up easier, use less water and do fewer washes – you can also use grout haze remover, just be sure to follow the manufacturers' directions.
- After sponging, remove the haze left behind – start with a damp rag and then a clean, dry rag.
- After a couple of days, seal the grout using Homax® One Step Grout Sealer.
- If your tile or stone is not glazed, be sure to seal it as well.



Use a rubber grout float to apply your grout.



Press the grout into all joints using several sweeps.



Once set, clean the tile with a damp sponge – rinsing it often.



Remove haze with a damp rag, then a clean, dry rag.

SECTION 11

APPLYING THINSET

If tiling damaged and uneven walls, you may want to consider using thinset mortar or mastic adhesive. When using these adhesives, follow all manufacturers' directions.

To help, here are some tips:

- Thinset comes two ways – as a powder or premix in a tub.
- Mastic is an organic adhesive that comes premixed in a tub.
- When using these adhesives, start by putting in a ledger on the wall, along the horizontal line where you will set your first full row of tiles. You will work upwards from this point.
- After allowing the tiles you set to cure for 12 hours, you can remove the ledger and apply the tiles going downward – supporting them with a strip of masking tape attached to the row of tiles above (this will prevent sagging).
- To apply adhesives, you will need a trowel.
- Use the smooth edge of the trowel to spread the adhesive.
- Use the notched edge of the trowel to rake the adhesive into straight lines and leave the right amount of adhesive behind for the tiles you have selected.
- Be sure to hold the trowel at an angle and press down so the teeth of the trowel touch the wall surface.
- To set a tile, press it into place and slide it across the ridges you made in the adhesive to fill in the grooves.
- Test your first tile by prying it up to examine the back – the adhesive should evenly cover the entire surface.
- You will likely need to put shims or spacers in to keep the tiles from sagging while they set.
- After setting a section, clean up any excess adhesive, including the grout lines to allow room for your grout.
- Remember, unlike Homax® SPRAY & SET™ Wall Tile Adhesive that allows you to grout the same day, you normally have to wait at least a full day before grouting your tile after using thinset or mastic.



Thinset or mastic may be good choices for damaged, uneven walls.



When applying adhesive, make certain the teeth of the trowel touch the wall.



Press the tile into place and slide it across adhesive ridges.



Be sure to clean up excess adhesive after setting a section.